



SELF VENTING HOSE

INSTALLATION INSTRUCTIONS

REQUIRED TOOLS

1/2" Drive Ratchet



1. Remove lid from your RaceJug.



2. Insert 1/2" drive ratchet into red plug



3. Rotate counter-clockwise



4. Fully remove red plug



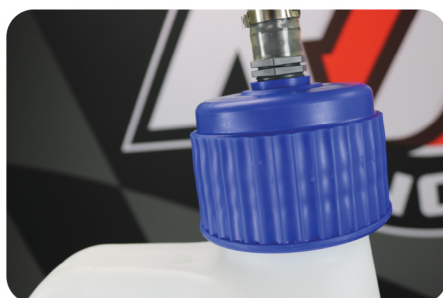
5. Insert vent hose thru the center of the lid



6. Hand tighten until fully seated



7. Insert the vent hose into the mouth of the RaceJug



8. Hand tighten lid until fully seated



9. Your self-vented hose is now ready to use.

JUG VENT IS NOT REQUIRED

Safety Tip:

**SLOWLY REMOVE HOSE CAP TO
RELIEVE ANY PRESSURE BUILD UP**